

# ED1000

LOW INTENSITY SHOCK WAVE THERAPY  
FOR ERECTILE DYSFUNCTION



Drug-free

Pain-free

Long-lasting  
treatment for sexual  
dysfunction

Er<sup>♂</sup>med  
Urology & Reconstructive Clinic

## ED1000 - A Breakthrough in ED Treatments

- A true solution to the ED problem - aiming at curing the disease rather than just treating it
- The first and only product in the market with proven and extensive clinical supporting data

## Proven Success

- The most significant medical revolution in the treatment of ED over the past 15 years.
- **Gold standard** according to EAU guidelines.
- Completely safe - **no adverse events.**



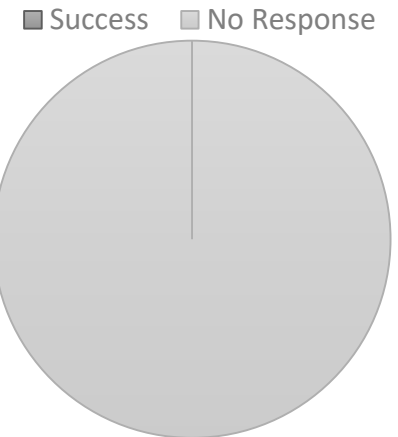
## Treatment Benefits

- Based on our data of patients, we got 95% Proven **Success rate**
- Based on angiogenesis - **triggers the body's natural repair mechanism**
- High success rate (over 73%) with patients who are **non-responders** to PDE5i
- Optimal level of energy which ensures successful & **pain free** results
- Completely **free of side effects**

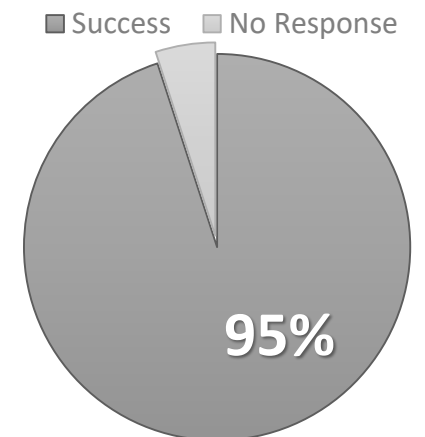
## Patient's Advantages

- The ED-1000 **eliminates the need to wait** before sexual intercourse
- Putting **Spontaneity** Back into Sex Life
- **Drug-free** solution
- Leads to **long-term improvement** in sexual performance

Before Treatment



After Treatment



## A Complete Shockwave Solution For Urologists

The ED1000 system can function as a multi-purpose treatment system for Urologists, treating **Erectile Dysfunction** as well as **CPPS** and **Peyronie's Disease** using one system only!

### CPPS (Chronic Pelvic Pain Syndrome) Definition

Inflammation of the prostate gland that may Result in pain during urination and Sexual malfunction.



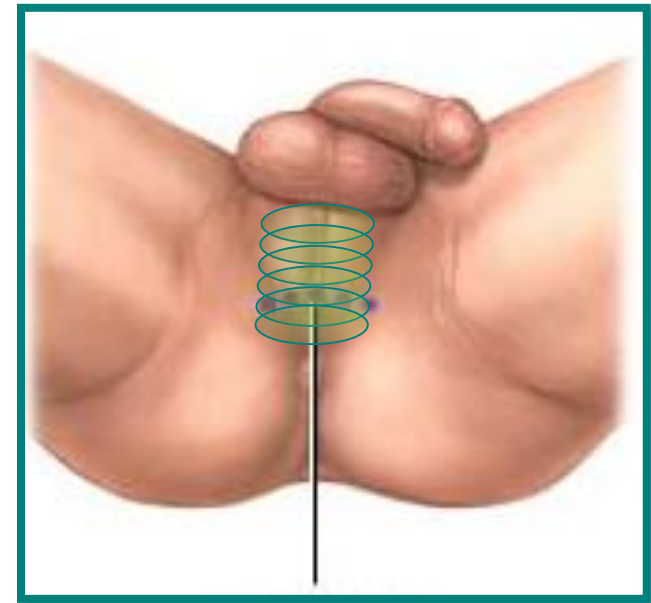
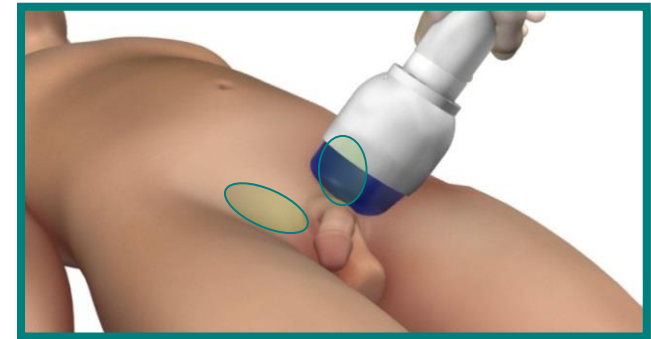
## CPPS - Treatment Methods

### Suggested Protocol

- 300 shocks per location (total of 2400 shocks per treatment)
- 8 locations (2 over the penile crura; 6 over the prostate)
- 6 sessions
- Total 14,400 shocks / patient

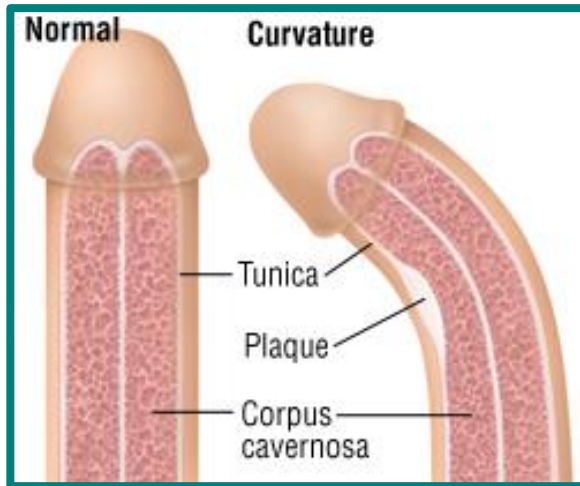
### CPPS Suggested Treatment Effect

The suggested mechanism of effect is the **analgesic effect**; It can significantly improve the patients' quality of life, due to alleviation in pain.



## Peyronie's Disease Definition

A connective tissue disorder involving the growth of fibrous plaques in the soft tissue of the penis affecting up to 10% of men.



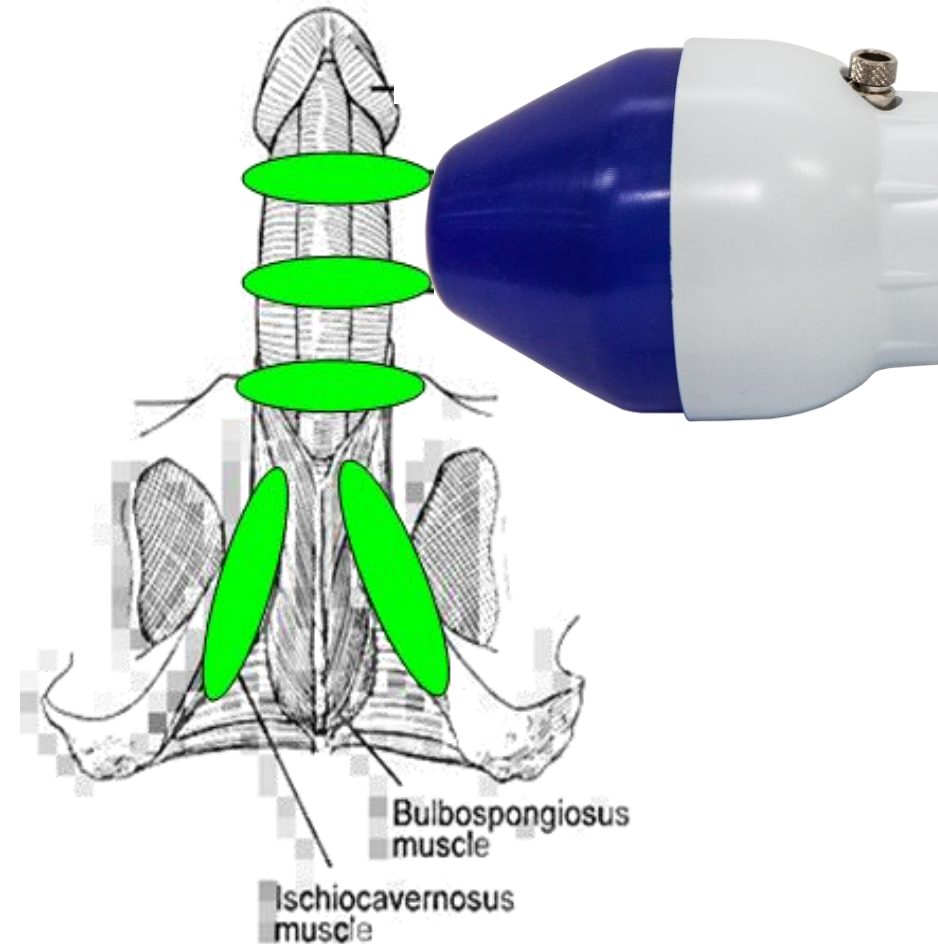
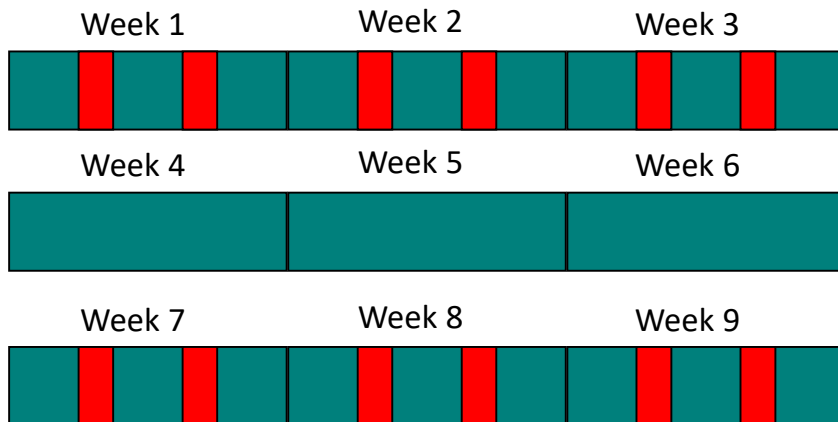
## Peyronie's Disease Suggested Treatment Effect

EDSWT can significantly **improve quality of life** for these patients as pain is relieved.



## Standard Protocol For ED

- 300 shocks per site
- 5 sites
- 12 sessions
- Total 18,000 shocks / patient





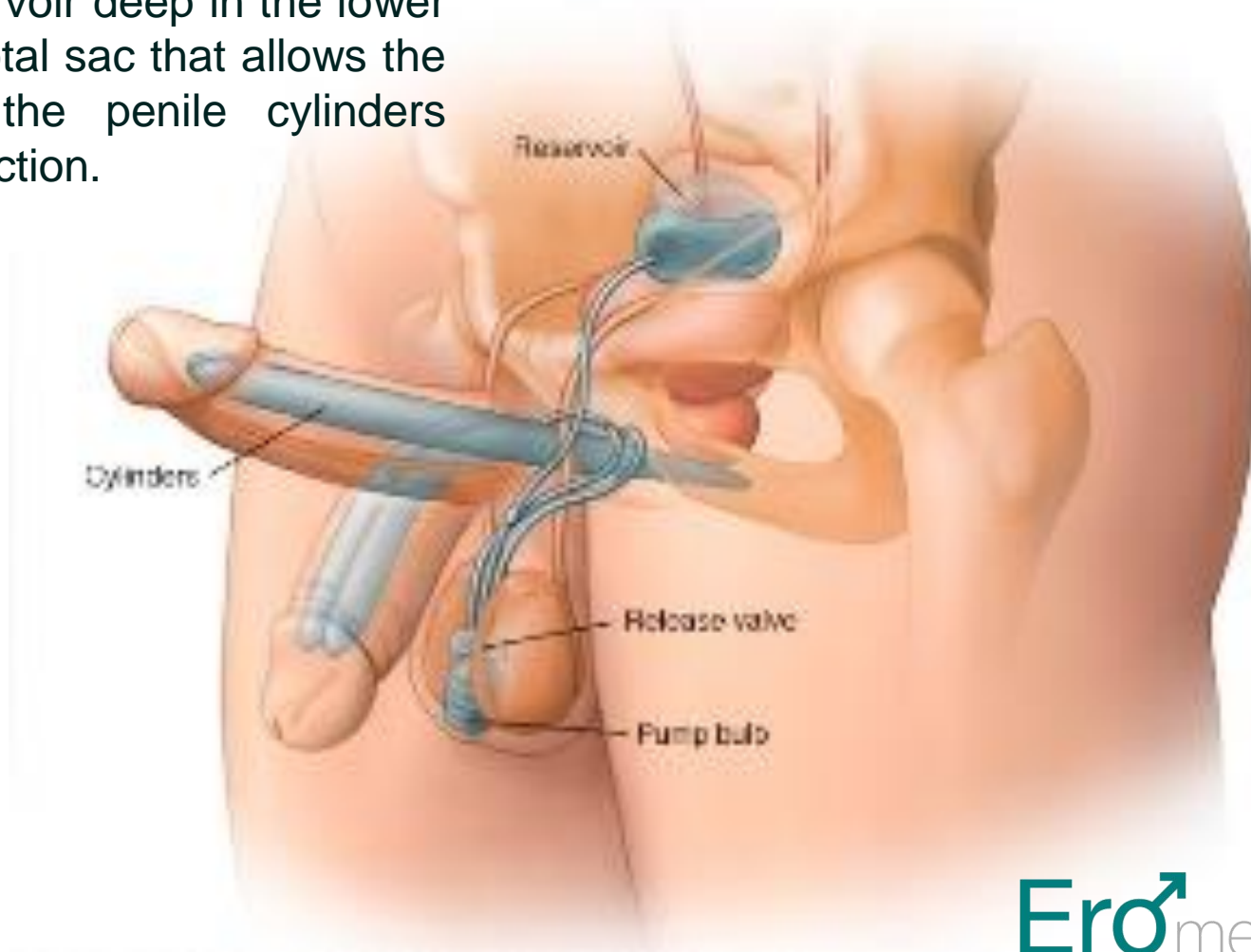
## Penile Prosthesis

Erectile dysfunction (ED), also called impotency, occurs when a man cannot keep a firm erection during intercourse. ED has many causes including physical disorders such as heart disease, prostate cancer, Peyronnie's disease, and diabetes. Emotional factors such as anxiety, depression, and stress can also lead to impotence. Fortunately, several therapies exist to help one with ED restore a satisfactory erection. Patients should review the alternatives with their urologist so that an appropriate treatment plan can be developed.





Perhaps one of the most reliable solutions to ED is the penile implant, also called an internal pump. The penile implant has several components, all of which are completely unexposed two water-filled cylinders in the penile shaft, a water-balloon reservoir deep in the lower abdomen, and a button in the scrotal sac that allows the patient to inflate and deflate the penile cylinders whenever he wants to have an erection.

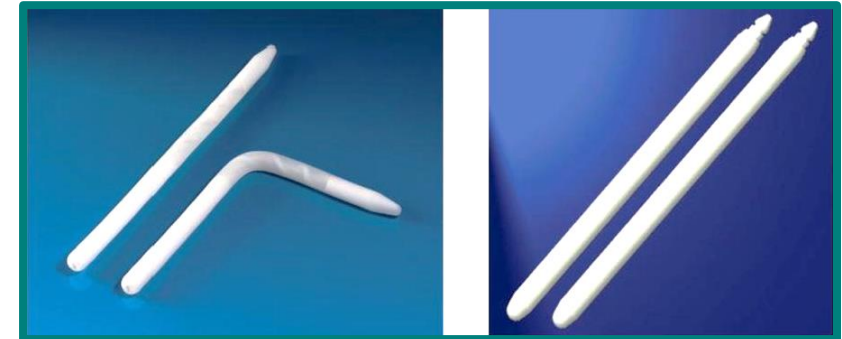


If you and your urologist decide that the penile prosthesis is right for you, **Dr Fadi Saadeh** has the experience and expertise to place the prosthesis. The procedure, which can be performed under either general or spinal anesthesia, usually requires about 90 minutes of operative time. No catheters are required and patients should refrain from heavy lifting and other exertional activities for 4-6 weeks.

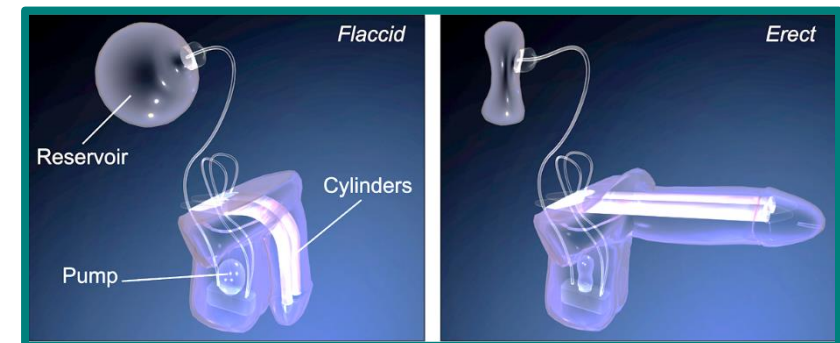
For the first six weeks while the tissues are healing, patients are asked not to activate their prosthesis or engage in intercourse. After about six weeks, patients have the device activated for the first time in the urologist's office.

Results are excellent for both **Inflatable** and **Non-Inflatable Prosthesis**.

### Non-Inflatable Prosthesis (2 pcs)



### Inflatable Prosthesis (3 pcs)





[www.ero-med.com](http://www.ero-med.com)